

WWW.NOMURASWISS.COM

Known world-wide for extreme rigidity and process stability



Swiss Type CNC Automatic Lathe **NN-20J3**



NN-20J3

Improved NC selectivity
- MITSUBISHI or FANUC

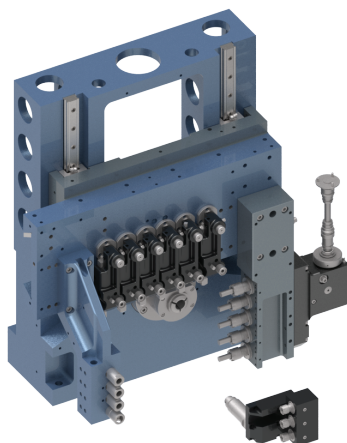
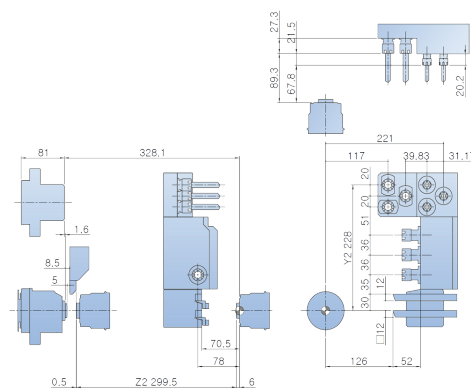
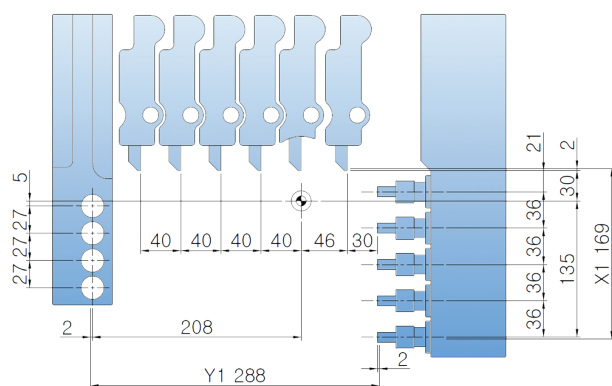
The best tool layout among equivalent models
- For complex shape machining
- Drastically shortened cycle time

Various special tools covered

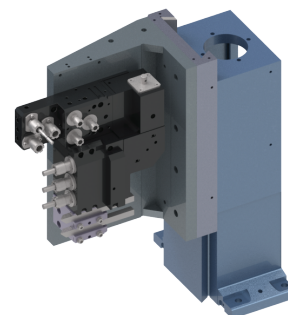
Improved machining capacity with high-precision parts and difficult-to-cut material
- Horizontal tool post
- Dovetail structure



TOOL Layout



3-spindle drilling unit
(E3 unit - Option)
for eccentric machining



\$1 (Main)

Tool name	Size	Equipment
O.D. Tool	□12.7 x 6	Standard
I.D. Tool	ER16 x 4	Standard
Cross Drill	ER16 x 5	Standard

\$2 (Sub)

Tool name	Size	Equipment
O.D. Tool	□12.7 x 2	Standard
I.D. Tool	ER16 x 3	Standard
Cross Drill	ER16 x 3	Standard
Eccentric Drill	ER11 x 3	Standard

NOMURA Corporate Office

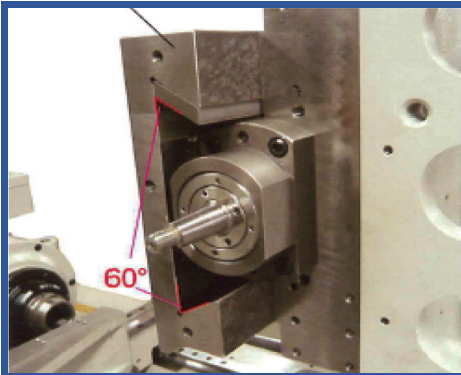
DAESUNG HI-TECH CO., LTD. KOREA



DOVETAIL STRUCTURE

HAND SCRAPPING

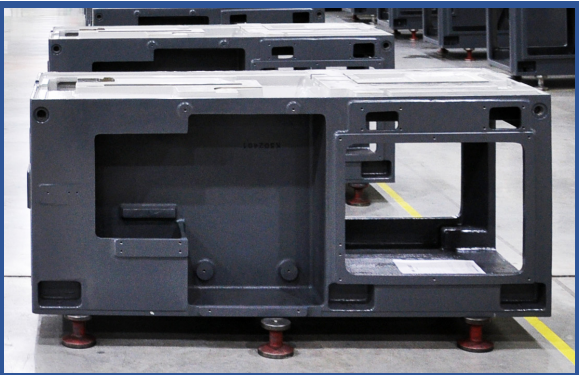
INTEGRATED CASTING BED



Nomura's world-recognized rigidity is enhanced through the precise contact built into our dovetail structures.

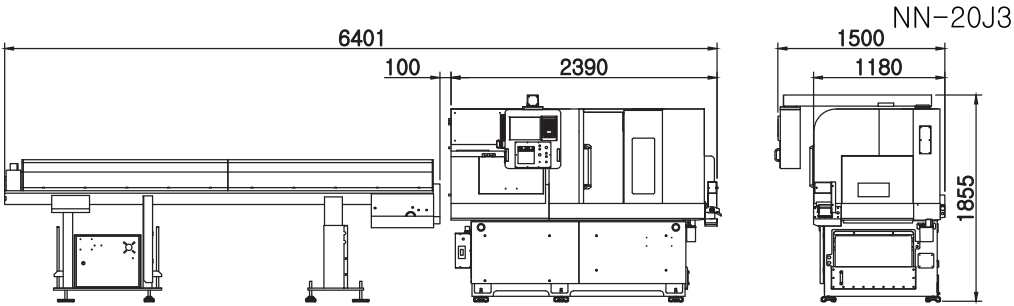


Master artisans painstakingly hand scrap Nomura machine ways for maximum precision and machine longevity



Nomura machines are built on a solid cast foundation carefully engineered to absorb machining stresses and tolerance specifications affected by such variables as temperature change. The coolant tank designed into the casting bed is an excellent example of temperature control.

FLOOR Layout



CNC AUTOMATIC LATHE

NN-2013 Specifications

Content	Specification	Specification Value	Standard Accessories
Machining capacity	Max. machining diameter	Φ20mm	I.D. tool unit
	Max. machining length	200mm / 1chuck	Cross drill unit
	Max. parts unloading length	93mm	Manual pulse generator(MPG)37P
Spindle	Main spindle through-hole diameter	Φ23mm	Coolant unit
	Spindle rpm (Main/Sub)	Max. 10,000rpm	Rotary guide bush
	Sub spindle chucking diameter	Φ20mm	Tool holder
Tool	Max. number of tools	30	Drill holder
	Max. machining drill	Φ10mm	Main : Chuck sleeve /Spring/Spindle cap(1set)
	Max. machining tap	M10	Sub : Chuck sleeve /Spring/Spindle cap(1set)
Main	O.D. tool	6 (□12.7X150mm max)	Automatic power turn-off device
	I.D. tool	4 (ER16)	Automatic oiling device (level detector attached)
	Cross drill	5 (ER16)	Cutting oil device(Main/Sub)
	Cross drill rpm	Max. 6,000rpm	Coolant failure detector
SUB	O.D. tool	2 (□12.7X150mm max)	Overload detection function
	I.D. tool	3 (ER16)	Door interlock switch
	I.D. eccentric	3 (ER11)	Working light (LED)
	Cross drill	3 (ER16)	Parts conveyor
	Cross drill rpm	Max. 6,000rpm	Parts catcher
Feed	Rapid feed rate	36m/min	Levelling pad
	Min. command unit	0.0001mm	Signal warning light - 3 stage
	C axis Min. command unit (Main, Sub)	0.0001°	Display language (CHN/ENG/FRA/GER/ITA/JPN/KOR/POL/RUS/SPA)
Motor	Main spindle motor	3.7/1.5kW(Mitsubishi) / 3.7/2.2kW(Fanuc)	Optional Accessories
	Cross drill motor	0.75kW(Mitsubishi) / 1.0kW(Fanuc)	Fanuc Oi-TF
	Sub spindle motor	3.7/1.5kW(Mitsubishi) / 3.7/2.2kW(Fanuc)	Long drill holder
	\$2 cross drill motor	0.75kW(Mitsubishi) / 1.0kW(Fanuc)	3-spindle drilling unit (E3 UNIT)
	Y1,Z1,X2,Z2 axis feed motor	0.5kW(Mitsubishi) / 1.4kW(Fanuc)	Fixed guide bush
	X1,Y2 axis feed motor	1.0kW(Mitsubishi) / 1.4kW(Fanuc)	Tap breakage detector (Main, Sub)
	Coolant pump (Main, Sub)	0.25kW X 2	Tool presetter
	Lubricant pump	0.003kW	Tool air blow
Dimensions and etc.	Main spindle center height	1,010mm	Rear ejection unit (Φ17mm or less)
	Input power capacity	17KVA	Spindle tube liner for small part
	Air pressure, flow rate	0.6MPa.40L/min	Large-sized lubricant pump 1.8ℓ
	Coolant tank	160L	Chip conveyor & Chip box
	WxDxH	2,390x1,500x1,855 mm	Medium / High pressure coolant
	Weight (Options included)	2,700kg	Automatic fire extinguisher
NC	NC (MITSUBISHI / FANUC)	M70V Type A(Mitsubishi) / Oi TF(Fanuc)	Oil mist collector
	NC display	10.4 Color TFT LCD	Custom colors
	Memory capacity	500KB(Mitsubishi) / 1MB(Fanuc)	Tooling
	Number of tool offset	80sets(Mitsubishi) / 128sets(Fanuc)	
	Background edit function		
	C axis function (Main, Sub spindle)		
	User macro function		
	Nose R compensation		
	Corner chamfering /Corner rounding		
	Fixed cycle		
	Complex fixed cycle		
	Geometric commands		
	Controller manual		
	Serial in / Output interface		
	CF card / USB interface		



NOMURA SWISS
 108 McDonough Street
 Dayton, Ohio 45402
 t: 937.228.5174
 e: info@nomuraswiss.com
 www.nomuraswiss.com